

## Suspended Poster "Cable" Displayer - A4 Portrait

### Suspended Poster Displayer - A4 Portrait

#### Description:

Combination, Flexible, Innovative, Multifunctional, Display Product  
Designed to be utilised in "Single-Sided Format" OR as a "Double-Sided Format"



### Suspended Poster Displayer - A4 Portrait

**Double-Sided Acrylics - max advertising!**

**8x Poster Acrylics = 16x Adverts**

Designed for "Ease Of Usage"  
Designed for "Poster Advertising"  
Designed for "Double-Sided"

**Additional Items (If ordered)**

6x A4 Brochure Holders

#### Advantages:

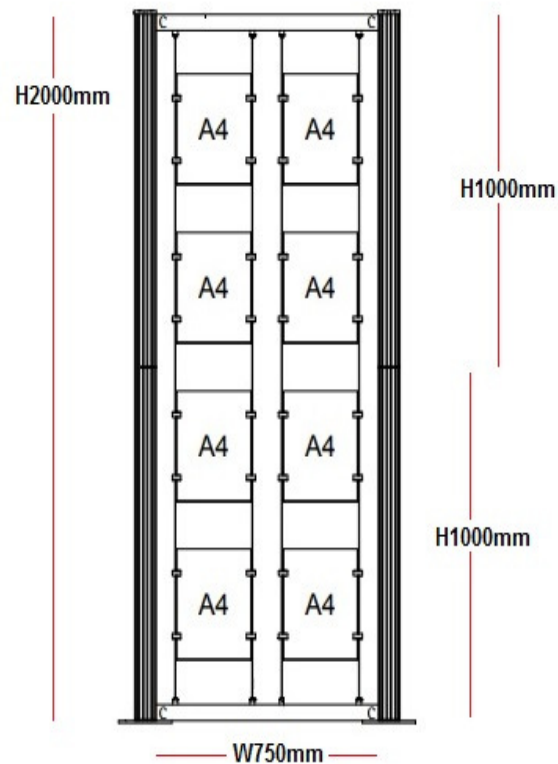
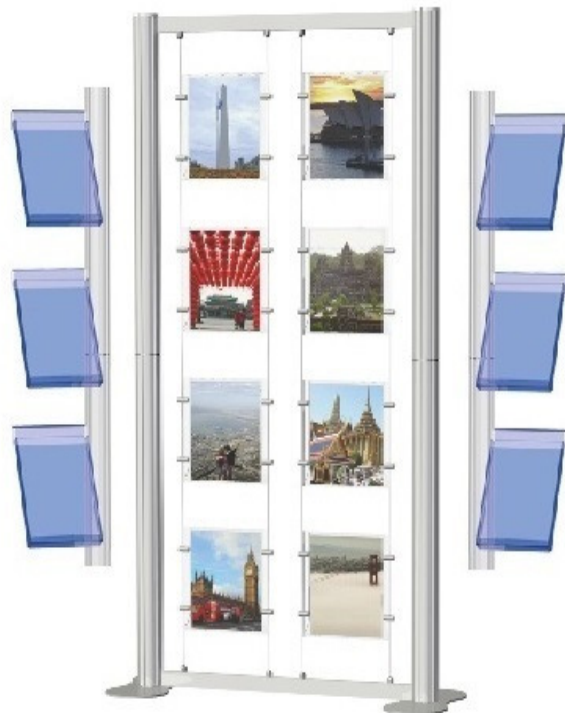
Double-Sided Acrylics - max advertising!  
Can be set-up as a permanent display  
Can be assembled quickly for Exhibition Events

## Suspended Poster "Cable" Displayer - A4 Portrait

## Suspended Poster "Cable" Displayer - A4 Portrait

### Suspended Poster Displayer - A4 Portrait

#### Components:



#### Parts

##### Description

4x 1000mm Posts

2x 750mm Crossbars

2x Base Plates

4x Cables

32x Single Cable Clamps

8x A4 Portrait Poster Pockets

1x T-Handle 4mm Hex Key

2x Acrylic Post End Caps

4x Post Clamps

#### Tip:

Double-Sided

Double-Sided Poster Acrylic

Thus 8x Acrylics

Displays 16x Documents

#### Measurements:

Height = 2000mm (approx)

Width = 750mm (approx)

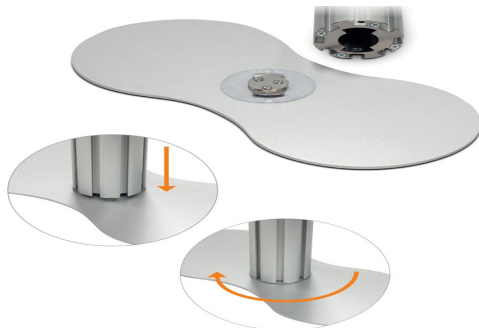
## Suspended Poster "Cable" Displayer - A4 Portrait

## Suspended Poster "Cable" Displayer - A4 Portrait

### Suspended Poster Displayer - A4 Portrait

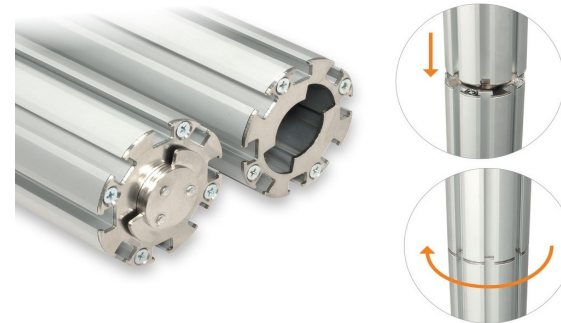
#### Step 1 - Base and Post (Lower)

1. Place "Base Plates" onto the floor
2. Push down 1x Post onto the base plate connector
3. Twist clockwise to lock into place



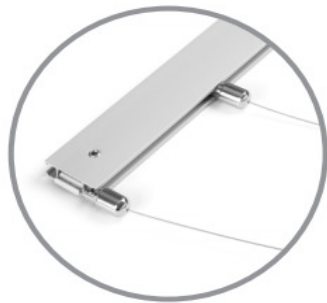
#### Step 2 - Post (Higher)

1. Affix Upper Post to Lower Posts
2. Push down Upper Post into Lower Post
3. Twist clockwise to lock into place



#### Step 3 - Fixing the Cable Slots

1. Refers to the TOP Crossbar
2. Lay the crossbar on a table / Floor
3. Introduce the "Fixing Slots" into the channel



#### Step 4 - Crossbar

1. Firmly holding the middle of the crossbar rail
2. Raise to the top of the display
3. Slot into post channel + secure into place
4. Repeat for other side of channel post



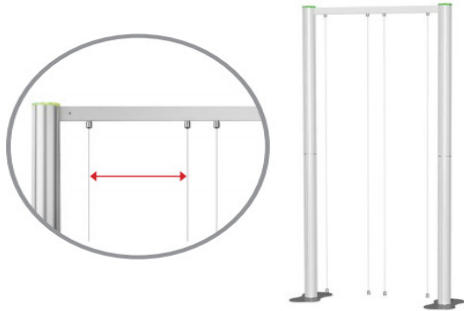
## Suspended Poster "Cable" Displayer - A4 Portrait

## Suspended Poster "Cable" Displayer - A4 Portrait

### Suspended Poster Displayer - A4 Portrait

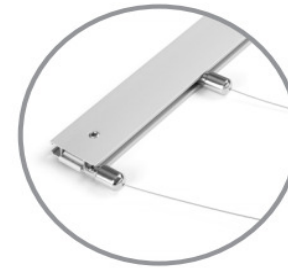
#### Step 5 - Positioning the Cables

1. Position the cables centrally along crossbar
2. Cable gaps are **265mm** (approx)
3. Warning - do not over tighten!



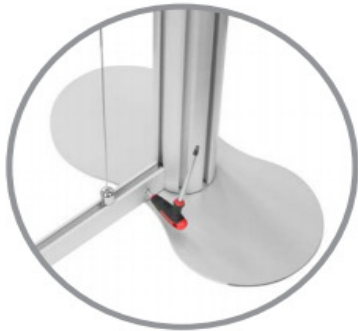
#### Step 6 - Fixing the Cable Slots

1. Refers to the BOTTOM Crossbar
2. Lay the crossbar on a table / Floor
3. Introduce the "Fixing Slots" into the channel
4. Ensuring they are parallel to those on the TOP



#### Step 7 - Tensioning the Cables

1. Tension cables by pulling bottom downwards
2. Secure to both posts by tightening the grub screws



#### Step 8 - Tensioning the Cables

1. Repeat step 7
2. Repeat for all cables



## Suspended Poster "Cable" Displayer - A4 Portrait

## Suspended Poster "Cable" Displayer - A4 Portrait

### Suspended Poster Displayer - A4 Portrait

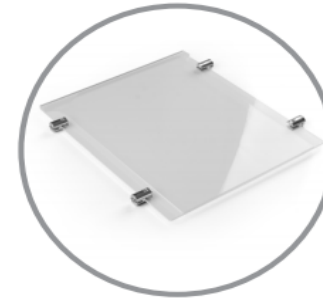
#### Step 9 - Chrome Connectors

1. Attach 4x Chrome connectors to each acrylic
2. Just slide them to each corner + tighten in place
3. Warning - **Do not over tighten!**



#### Step 10 - Chrome Connectors

1. Once step 9 has been completed
2. They should look like this image
3. Now repeat for all other acrylics



#### Step 11 - Chrome Connectors

1. Now remove all the side-grub-screws
2. Keep them handy as you will need them now



#### Step 12 - Connecting to the cables

1. Introduce the acrylic / connectors to the cable
2. Now replace the grub-screws and tighten in place
3. Tip - Before tightening check with a spirit level
4. Repeat process for all remaining acrylics



## Suspended Poster "Cable" Displayer - A4 Portrait

## Suspended Poster "Cable" Displayer - A4 Portrait

### Suspended Poster Displayer - A4 Portrait

#### Step 13 - (If Supplied) - Table Assembly - Part 1

1. Introduce the table to the post
2. Secure 4x screws - Do not over tighten!



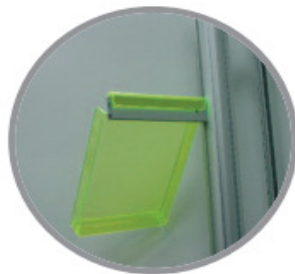
#### Step 14 - (If Supplied) - Table Assembly - Part 2

1. Affix Table Leg to post leg
2. Position the 2x 220mm straight profiles
3. Secure using the expanding clamp grub screws



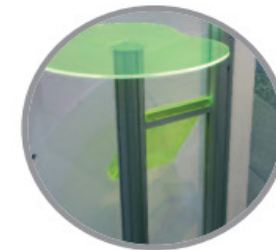
#### Step 15 - (If Supplied) - Leaflet Holders - Part 1

1. Locate 220mm straight profile into desired location
2. Insert into post channel
3. Secure into place - Do not over tighten!



#### Step 16 - (If Supplied) - Leaflet Holders - Part 2

1. Locate rear hook form of acrylic
2. Present over straight profile
3. Press into position - (no screws required)



## Suspended Poster "Cable" Displayer - A4 Portrait